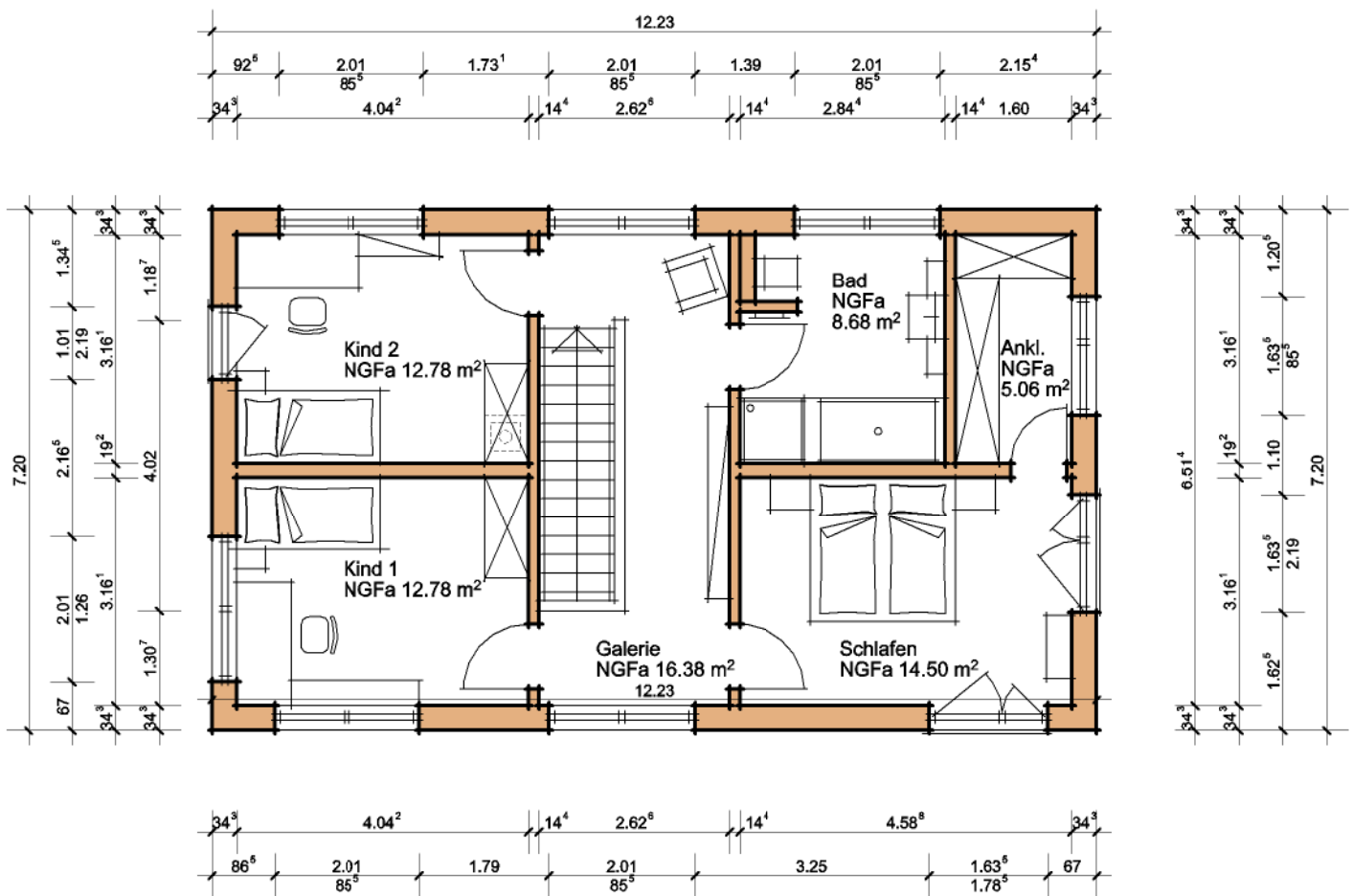
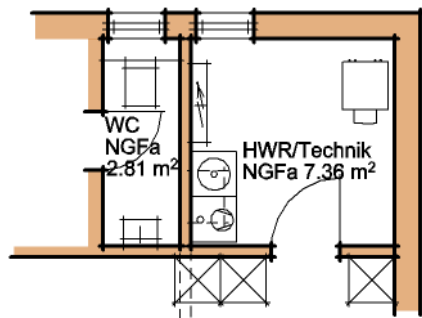
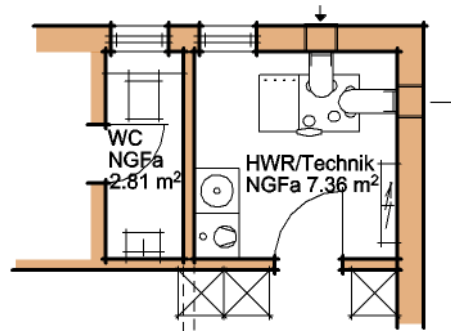


Nettogrundfläche nach DIN 277:	
NGFa EG:	71,71 m <sup>2</sup>
NGFa OG:	70,18 m <sup>2</sup>
NGFa EG + OG:	141,89 m <sup>2</sup>

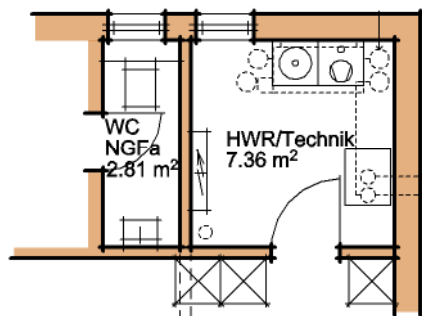




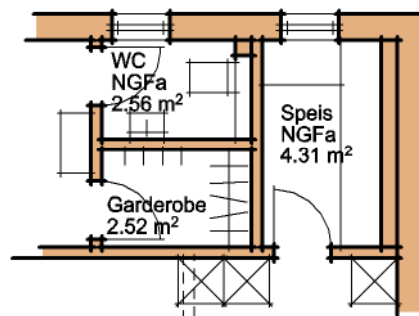
Variante Vaillant VWS / recoVAIR



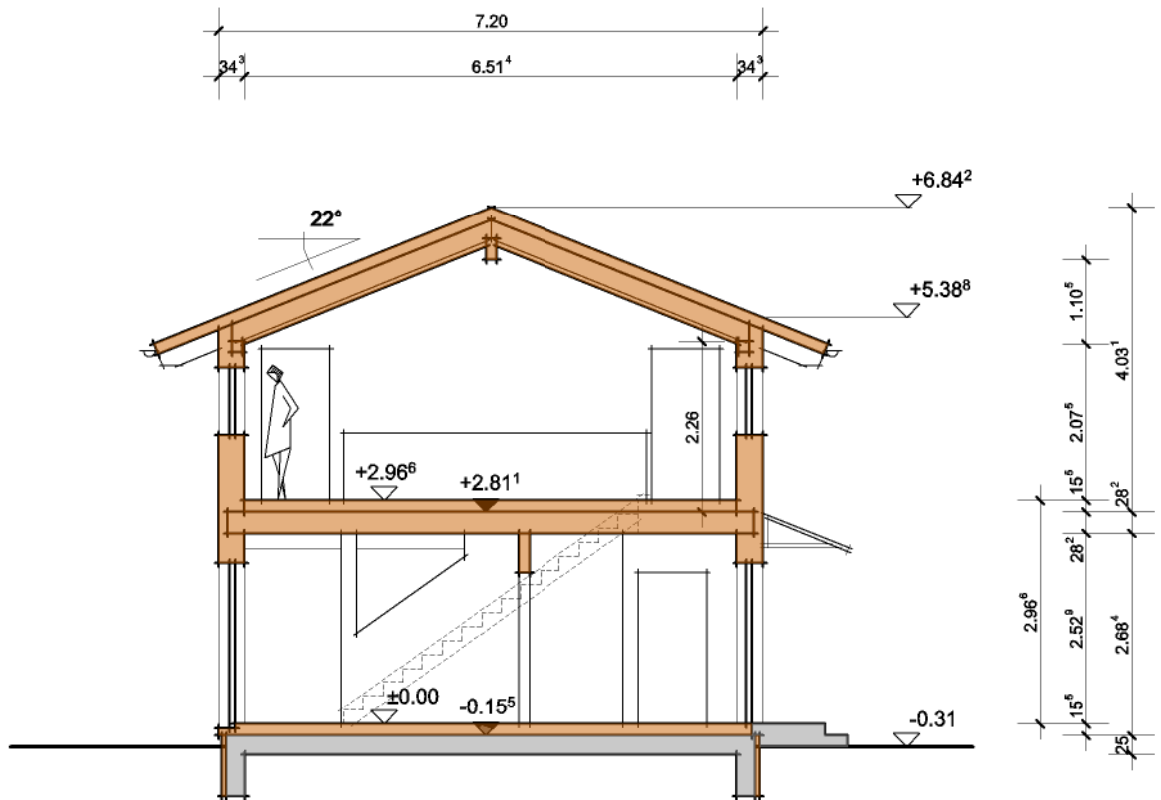
Variante Tecalor

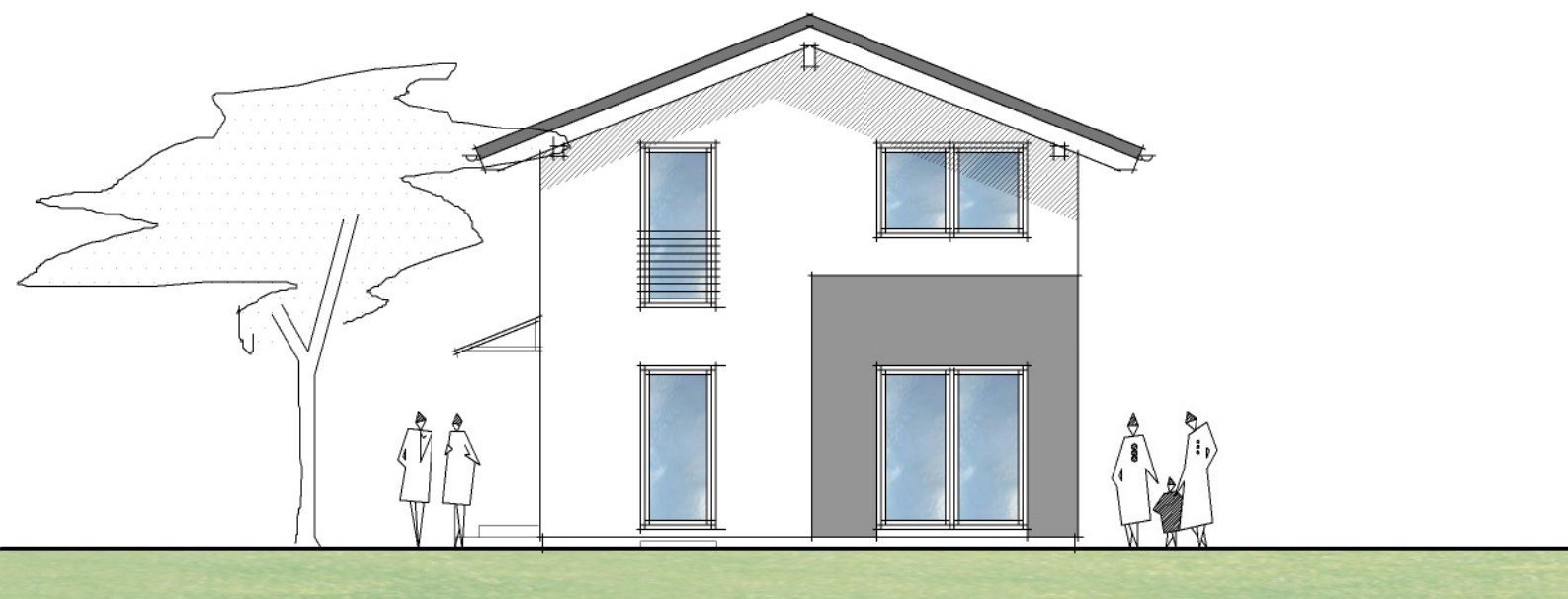
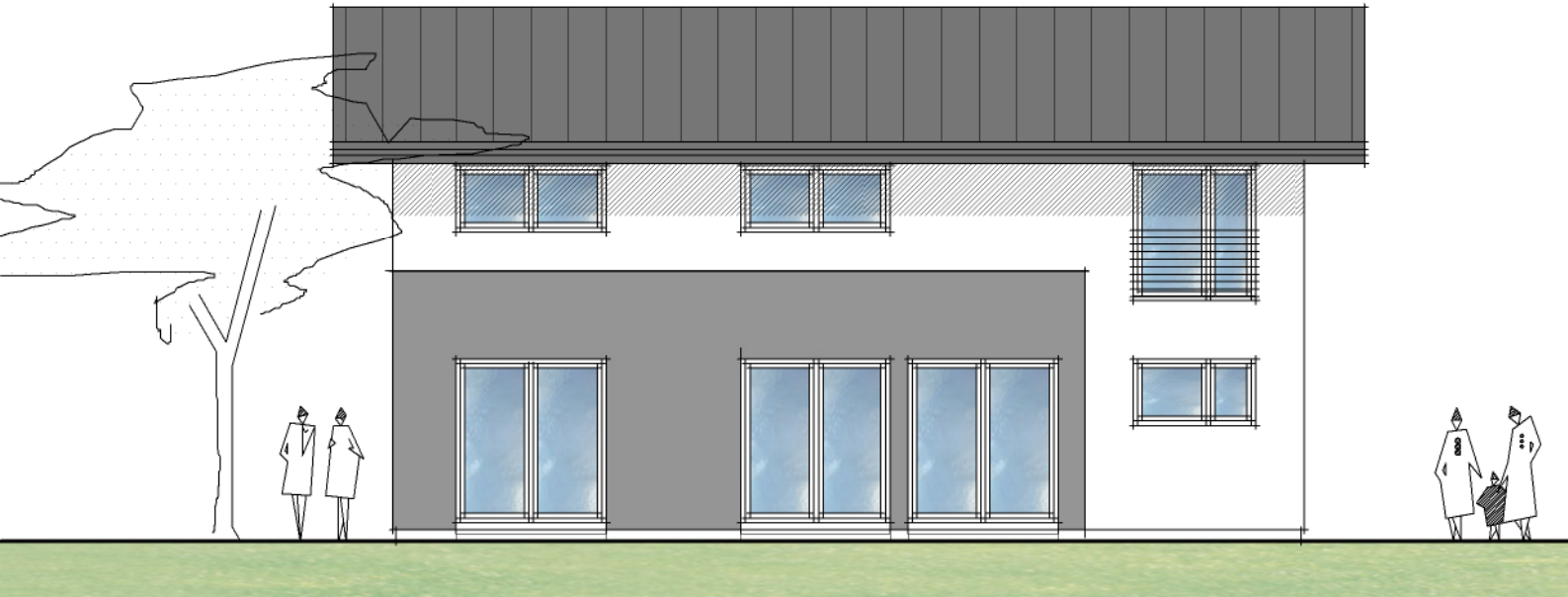


Variante Proxon



Variante mit Keller





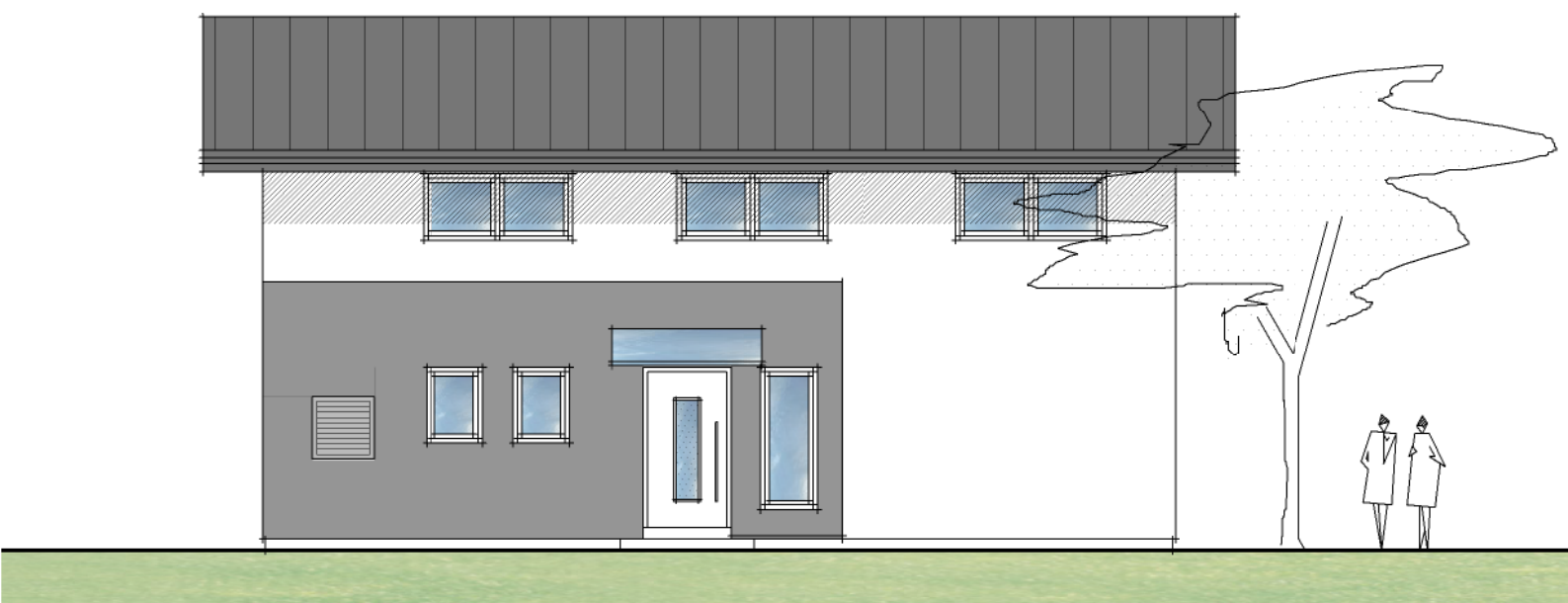
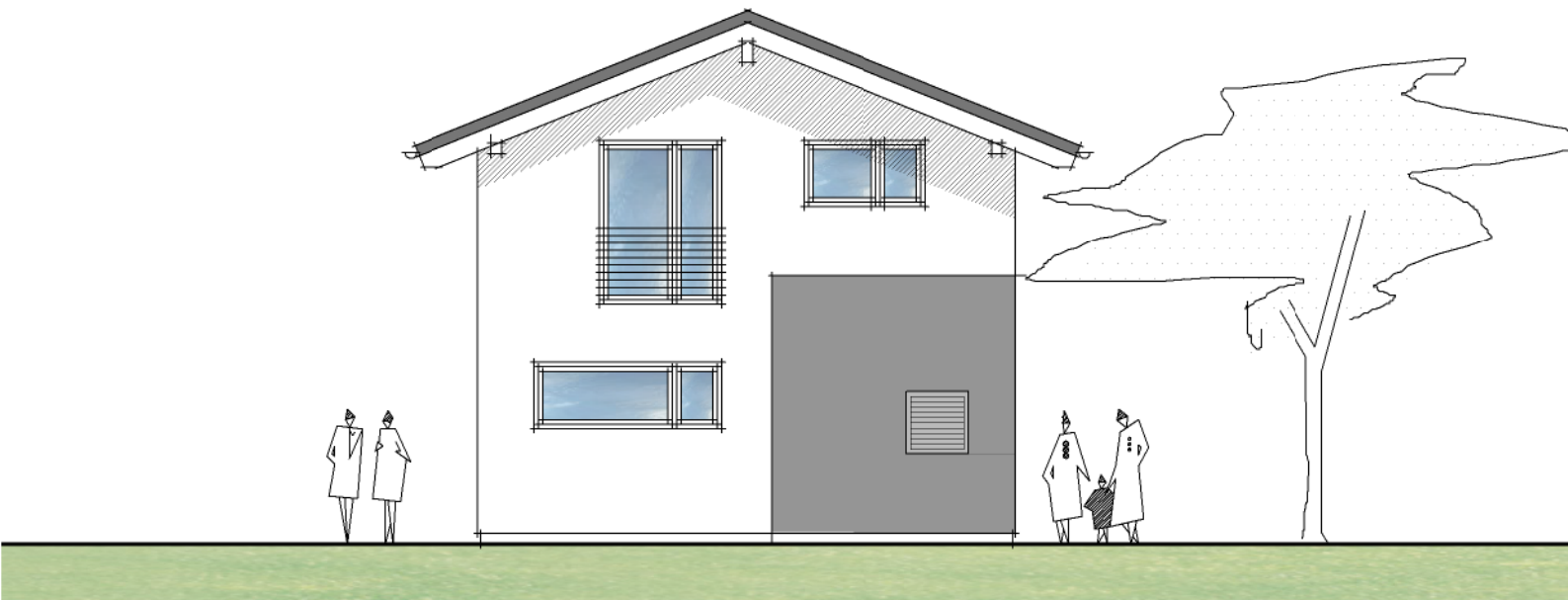
Variante mit farbig abgesetzten Putz

**Jubiläumshaus 40-1 (Kniestock)**

Dachneigung: 22° - 2.26m Kniestock

Maßstab 1:100

Datum: 18.05.2012



Variante mit farbig abgesetzten Putz

**Jubiläumshaus 40-1 (Kniestock)**

Dachneigung: 22° - 2.26m Kniestock

Maßstab 1:100

Datum: 18.05.2012